

Galfan[®]

Technical Datasheet

Uses

This zinc based coating performs exceptional corrosion resistance, sacrificial protection, formability, weldability and paintability. This alloy is used for continuous galvanizing.

Chemical specification

Chemical specification	Galfan 7	Galfan 10
Al	6.6 – 7.4%	9.4 – 10.6%
Ce	0.02 – 0.06%	0.02 – 0.06%
La	0.02 – 0.06%	0.02 – 0.06%
Pb	≤ 0.005%	≤ 0.005%
Cd	≤ 0.005%	≤ 0.005%
Fe	≤ 0.075%	≤ 0.075%
Sn	≤ 0.002%	≤ 0.002%
Cu	≤ 0.03%	≤ 0.03%
Mg	0.01 – 0.03%	0.01 – 0.03%
Zn	balance	balance

Physical data

Physical property	Galfan 7	Galfan 10
Density (solid @20 °C) (kg/dm ³)	6.3	6.1
Solidification range (°C)	382-400	382-422

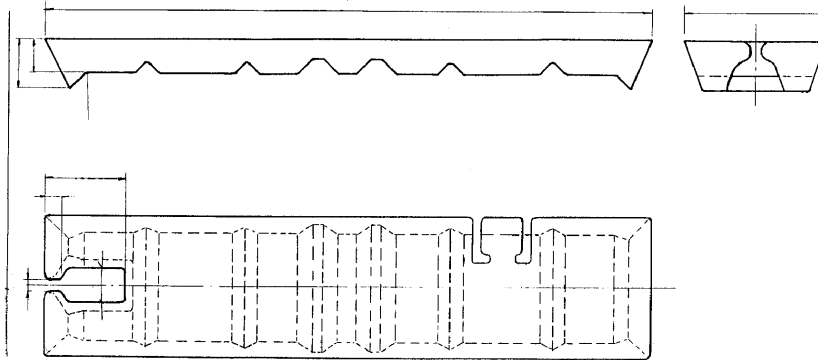
Available shapes/package

Shape/package	Nominal weight (in kg)	Dimensions (in mm)
Slab	7.3 – 7.7	515 x 120 x 40
Foot	12.4 – 13.1	510 x 110 x 120
Slab bundle (72 slabs + 4 feet per bundle)	560 – 600	515 x 515 x 620

Galfan[®] Technical Datasheet

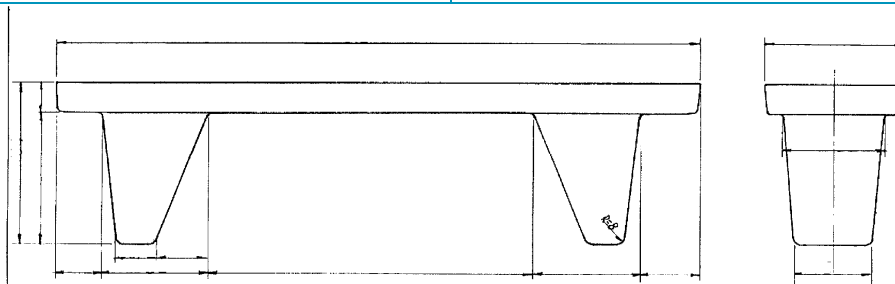
Slab

Nominal mass 7.3 – 7.7 kg
Dimensions 515 x 120 x 40



Feet

Nominal mass 12.4 – 13.1 kg
Dimensions 510 x 110 x 120



Slab bundle (72 slabs + 4 feet per bundle)

Nominal mass 560 – 600 kg
Dimensions 515 x 515 x 620

